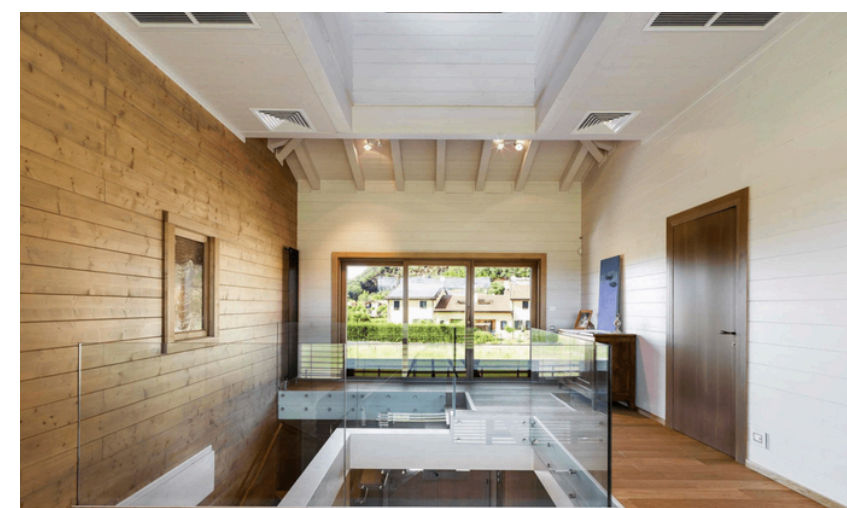




MAHARISHI VASTU Medium Home Designs (1400-3000 sf)

© 2008-2024: Maharishi Vastu, Maharishi Vedic and Maharishi Sthapatya Ved, are registered trademarks licensed to Maharishi Foundation International (MFI) and used under sublicense or with permission. Duplication or reproduction by any means without the express written consent of MFI or its representatives is a violation of Federal and international law. The information contained on this presentation is the intellectual property of the MFI and all rights thereto are reserved.



The Atrium

1350 sf (1 story)

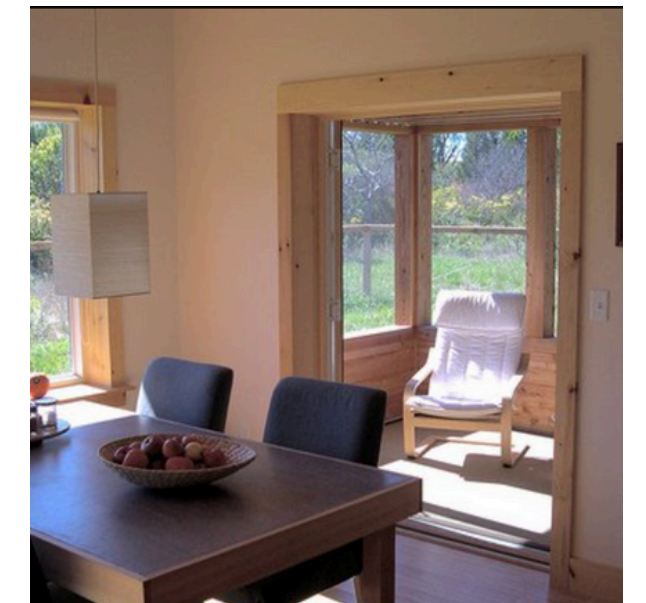
- Master suite
- Second bedroom with bath
- Open kitchen, living, dining plan
- Meditation room



The Ithaca

1563 sf (1 story)

- Master bedroom with adjoining bath and walk-in closets
- Open kitchen, dining, and living rooms with access to a screened porch
- Meditation room adjacent to secondary bedroom
- Two bathrooms, including one near the guest/secondary bedroom





The Meadowlark

1650 sf (1 story)

- Master bedroom with bath
- Open kitchen and dining room
- Covered east porch
- Spacious living room
- Guest bedroom and bath
- Office/third bedroom
- Meditation room



The Greenfield

(1880 sf 2 story)

- Master suite with adjacent laundry on first floor
- Spacious, open dining room
- Living room with central Brahmasthan and views to the north
- Large bedroom and bath on second floor
- Optional second bedroom on upper floor
- East balcony on upper floor
- Second floor sitting room
- Meditation room



The Seaside

2100+ sf (2 story)

This two story home fits on a narrow lot with up to 4 bedrooms, 2 bathrooms and washer / dryer upstairs or workout space. The ground level features 2 offices, one that doubles as a guest bedroom.





The Rose

2268 sf (2 story)

- Large living/dining room open to above
- Spacious kitchen
- Guest bedroom/study with bath
- Meditation room
- Tiled entryway with deep closet
- Deep east side porch
- Master Suite with full bath
- Second bedroom with full bath
- Extensive, under eave storage closet





L-Shaped Rainbow

2300 sf (1 story)

Main house is 2300 SF, three bedrooms, two bathrooms, meditation room, open concept living with fireplace in living room. Extend your outdoor living with L-shaped covered porches that open to the 1300 SF courtyard.



The Adriatic

2300 sf (1 story)

- Open plan kitchen, living and dining room
- Master suite with adjacent laundry area
- Large second bedroom with full bath
- Large office/third bedroom
- Mud room at north porch entry area
- Large meditation room
- East foyer with closets
- Spacious, deep porches on east and west
- Other options include 2700 and 2900 sf variants



The Oceanside

2456 sf (1 story)



- Grand living room with fireplace
- Spacious dining room with bay window
- Full east verandah
- Marching screened porches off dining and living rooms
- Master suite with walk-in closet and bath
- Second bedroom with walk-in closet □
- Third bedroom and bath
- Office with french doors off □ brahmasthan
- Large laundry room
- Meditation room





The Constellation

2585 sf (2 story)

- Spacious living room with bay window
- Dining room
- Open kitchen
- South porch
- Large office with bay window
- Entry way with walk in closet
- Meditation room
- Optional attached garage and mud room
- Master suite with walk in closet and full bath
- Second bedroom with walk in closet
- Bath
- Guest room
- Laundry room
- Optional attached garage and mud room

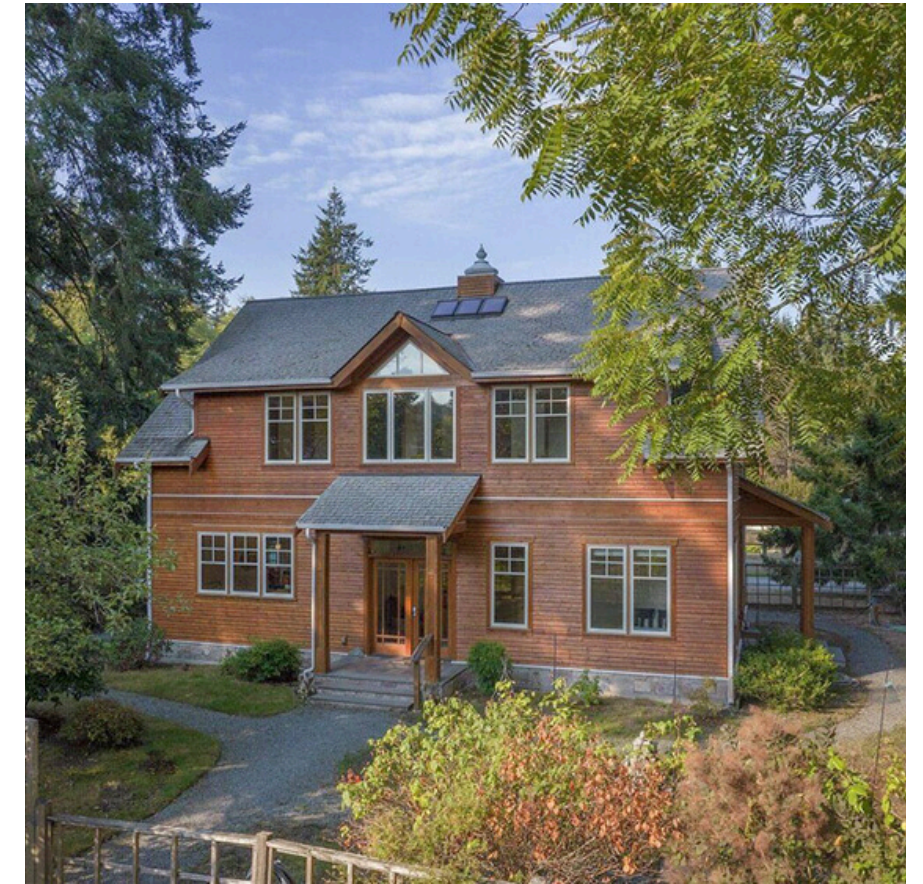


The Carriage House

2594 sf (2 story)

Two-story home, open living, dining area with sunroom, central brahmasthan open to above, large kitchen, guest bedroom and bath on first floor.

Second floor primary suite with full bath and walk-in closet, covered east porch, second bedroom with full bath and adjoining study studio/sitting room area, north and east entries to home.





Mountain View

2700 sf (2 story)

Two-story home featuring a spacious great room and two west verandas. Large kitchen adjacent to the dining area. Master bedroom suite with dual closets and full bath. Additional bedroom and office space, each with direct bathroom access.



About Maharishi Vastu Architecture



Derived from ancient principles of nature

The earth rotates to the east, so we spend our lives traveling this way, and no matter where we live the sun always comes to us from this direction.

It is the most powerful influence of nature on life on earth, so when we face east we resonate with nature's organizing intelligence. Maharishi Vastu buildings are designed to take advantage of this.



Right direction, right placement, right proportion

We offer a medically documented link to good health, lowered stress, and family harmony.

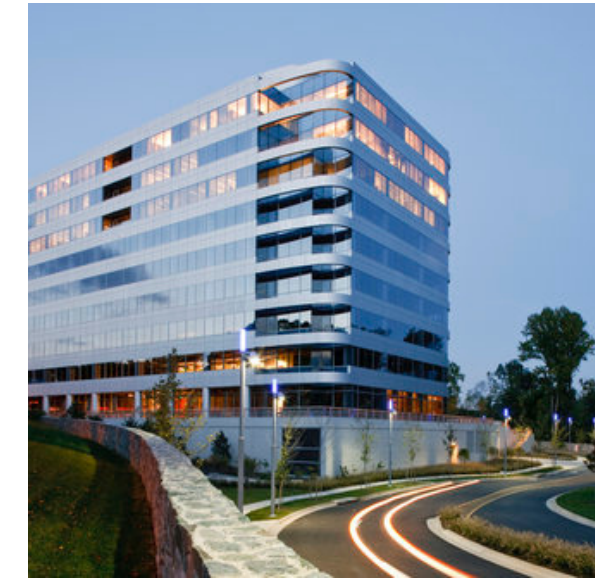
These result from three key, ancient Vedic elements: right direction, right placement, and right proportion, along with science-based steps to minimize the effects of contemporary environmental conditions.



System, not a style, for new construction

Our projects range from homes to mid-rises. We also work with developers on several other building types and can adapt to almost any style of construction. We can consult on:

- Site evaluation (remotely) before a site is selected,
- Master planning,
- Concept or schematic designs,
- In some cases provide all phases of design.



37 US states, 57 countries, and six continents

We have been architects or consultants on half a billion dollars of Maharishi Vastu® buildings in the US, and many more in 56 other nations worldwide.

Projects have been executed in 37 states and all continents save Antarctica.

Contact Us



Derived from ancient knowledge, backed by modern science.
Homes, buildings and communities in harmony with nature.

www.maharishivastu.com

clientservices@maharishivastu.org

US Office Phone: 641-472-7570

MAHARISHI VASTU